

Key Contacts

Life Insurance, Disability Insurance, & Annuities



Matthew Teel
CFP®, CLU®
Managing Principal



Tim Lemoine
Brokerage Manager
203-513-6117
tlemoine@riskassoc.com



David Abel, CFP®, CLU®
Brokerage Wholesaler
203-513-6395
dabel@riskassoc.com
[Book an Appointment](#)



Ryan Tracy
Brokerage Wholesaler
914-372-2896
rtracy@riskassoc.com
[Book an Appointment](#)



Niko Vamvakas
Annuity Manager



Joseph Payette
Annuity Analyst

Life, Long-Term Care & Disability Income

203-513-6290

lifesales@riskassoc.com

Submit a quote request at www.lifemah.com

Fixed & Indexed Annuities

203-513-6291

annuities@riskassoc.com

Submit a quote request at www.lifemah.com

Key Contacts

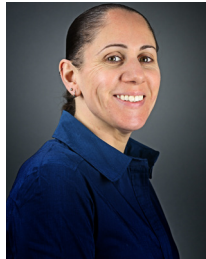
Life Insurance, Disability Insurance, & Annuities



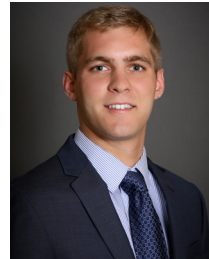
Dedicated Case Management



Kelly Connolly
New Business
Manager



Jen Soter
New Business
Analyst

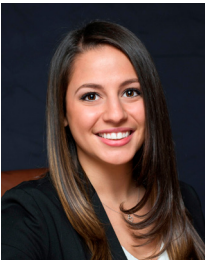


Matthew Nelson
New Business
Analyst



Amelia Nathanson
New Business
Director

Contracting



Melissa Poli
HR Consultant



Jillian Dewbury
HR Coordinator

P: 203-513-6077 F: 203-513-6113
contracting@barnumfg.com

Inforce Policy Service



Andrea Millard
Manager, Client Service Center

P: 203-513-6202
riasservice@barnumfg.com

Submit a new application

View e-applications at www.lifemah.com

New paper apps

(fax) 203-951-5772

(email) rianebusiness@barnumfg.com

(mail) Risk and Insurance Associates
6 Corporate Drive, Suite 503
Shelton, CT 06484

Outstanding Requirements and Inquiries

View pending cases under the "Case
Status" linke at lifemah.com
203-513-6159

riastatus@barnumfg.com

[Book an Appointment Online](#)