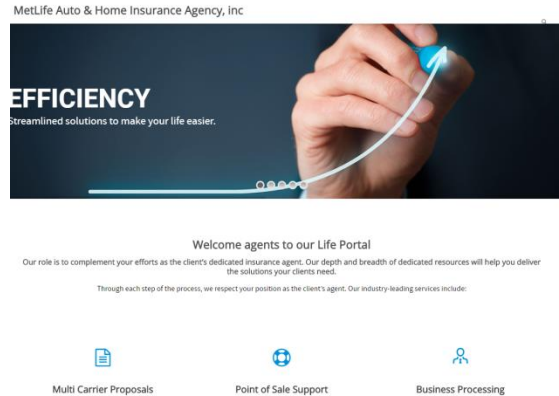


Life Program

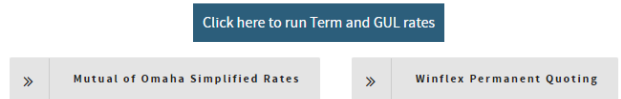
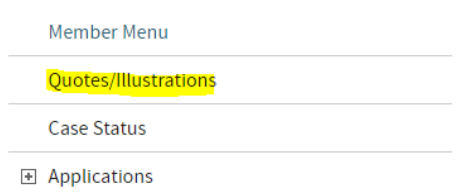
Getting Started (takes about a minute)

1. Go to WWW.LifeMAH.com
2. Click **Register** In the top right corner
 - ✓ Create your own Username
 - ✓ Complete additional required fields
 - ✓ Sign in with username and password



Quotes (takes about a minute)

3. You can run Term and Guaranteed UL simply clicking the Quotes/Illustrations link



Permanent products/full illustrations can be requested by email at MetlifeQuotes@BarnumFG.com or call 844-225-8671

Once contracted/appointed with a carrier you will gain access to run permanent products & full illustrations yourself

Submitting a Application

4. After running a quote, you can instantly start an application by launching iGO. Select the **Blue drop ticket button** **Drop Ticket** to the right of the quote to launch. You can submit any product via E-app (with exception of Mass Mutual) by going to LifeMAH.com and follow the steps below:

Simply Click Forms > Electronic > Forms >(iGo) > Launch iGO > Start New Case > Find Available products > Select Product you want to apply for... IT IS JUST THAT SIMPLE !!

** Choose Drop ticket/tele app/Worksheet /short app for the abbreviated telephone interview application**
OR

To Retrieve a started iGO application at LifeMAH.com:

Simply Click Forms > Electronic > Forms >(iGo) > Launch iGO > View My Cases > Select clients name > > Select Application Tab

Paper apps email: MetlifeNB@BarnumFG.com fax: 203-513-6080

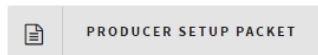
Next Steps

Contracting Steps

All Carriers (except Mass Mutual)

1. Log into www.LifeMAH.com
2. Click Licensing & Contracting
3. Click Get Contracted
4. Click Producer set up packet

The Producer Setup Packet is available below. It is recommended that the Producer Set-Up Packet is sent in at least **3 days PRIOR** to business submission. We ask all agents to complete a new Producer Setup Packet once a year for compliance.



After completing the Producer Set-Up Packet, fax the required documents to 203.513.6113 or email to Contracting@BarnumFG.com

- ✓ Complete packet, print and Wet Sign send to Contracting@BarnumFG.com

Typically 7-10 business day processing time frame

****PA agents must be fully contracted prior to first application submission with most carriers****

Mass Mutual

1. Email your Name and SSN to Contracting@BarnumFG.com Requesting you want a Mass Mutual appointment

- ✓ Mass Mutual will email you a link to complete their forms online
- ✓ Complete required forms, typically 5-7 business days to process

Member Menu

Quotes/Illustrations

Case Status

☑ Applications

☑ Carriers & Products

Training

Marketing

☑ **Licensing & Contracting**

AML Training

Get Contracted

☑ Underwriting

☑ Agent Resources

Updates & Alerts



Case Status

- You will receive weekly Emails with a list of all your cases and their current status in Underwriting

And

- From LifeMAH.com you can click the **Case Status** link to view your pending policies (if you receive a login screen please email MetLifeStatus@BarnumFG.com or call 1-203-513-6159)

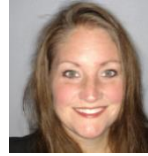
OR

- You can request a status by emailing MetLifeStatus@BarnumFG.com or calling 203-513-6159

Life Team

 Register **FAST** at: <https://LifeMah.com>


Matt Pandiscia
 Program Manager
 980-260-5121
Mpandiscia1@metlife.com



Julie Kunde
 Operations Manager
 401-827-3711
Jkunde@Metlife.com



Tyler C. Smith
 National Sales Manager
 980-260-5039
Tsmith23@metlife.com

Phone: **1-800-648-0787** Email: MAHLifeQuestions@Metlife.com

- Registration Help
- Submitting an Application
- Training Requests
- Website Navigation
- Compensation Questions
- General Inquiries

Sales Desk Analysts



**Adria
 Abboud**



**Kourtney
 Zando**



**Cassidy
 Boegel**

Mon-Fri 8am -5pm Est

Email: MetLifeQuotes@BarnumFG.com

Phone: 844-225-8671

Quote Requests, Product Suitability, Underwriting risk class inquiries



Kelly Connolly
 New Business
 Team Lead



Mike Witdorchic
 Advanced
 Underwriting



Jen Soter
 Jr. NB Analyst



Juan Paez
 Jr. NB Analyst



Amelia Nathanson
Director of New Business

New Business Department

E-Applications available at LifeMAH.com

New Paper Apps

Email: MetLifeNB@BarnumFG.com

Fax: 203-951-5772

Mailing Address: Barnum Financial Group
 Attn: MLAH 6 Corporate Drive Shelton Ct, 06484

Submitted Case Follow Up & Outstanding Requirements

- LifeMAH.com under "Case Status" Link

Email: MetlifeStatus@BarnumFG.com

Phone: 203-513-6159

Contracting

Phone: 203-513-6381 **Fax:** 203-513-6113

Contracting@BarnumFG.com



Melissa Poli
 HR Coordinator



**Hasselth
 Madrigal**
 HR Coordinator

Inforce Service (Agent of record line only)

Phone: 203-513-6159

MetLifeService@BarnumFG.com